

Lincolnshire's managed e-learning portal & secure network for e-service

NETLinc

Portfolio Holders of the future

Local Authority officers

Pupils ✓ creating ✓ developing ✓ moderating ✓ publishing ✓ protecting

School staff

Local Authority officers

Locations: Gainsborough, Keelby & Brocklesby, Long Bennington, Skegness, Stamford, Long Sutton

Vision:
 Accessible across Lincolnshire, NETLinc is an inclusive, seamless on-line system that supports lifelong learning and is responsive to personal and professional needs. Via a single sign-on, users can access digital learning resources, collaborate creatively with others within and beyond Lincolnshire, contribute to web-based projects, and access interoperable public services using a variety of technologies.

Bertold Weidmann, Head of ICT
 Education & Cultural Service Directorate, Lincolnshire County Council
 bertold.weidmann@netlinc.org.uk

NETLinc:
 110 000 users, 16 000 workstations, 520 sites across Lincolnshire

Broadband penetration

Connected Sites

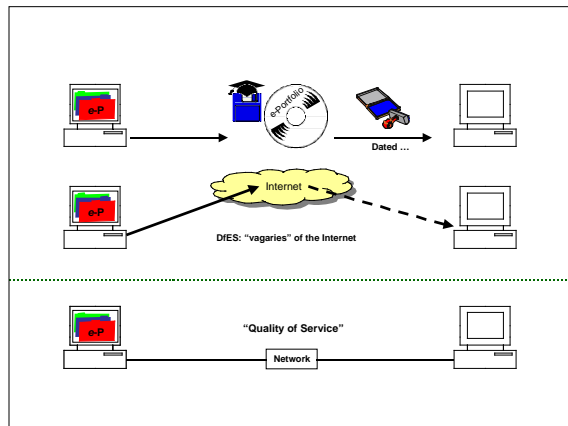
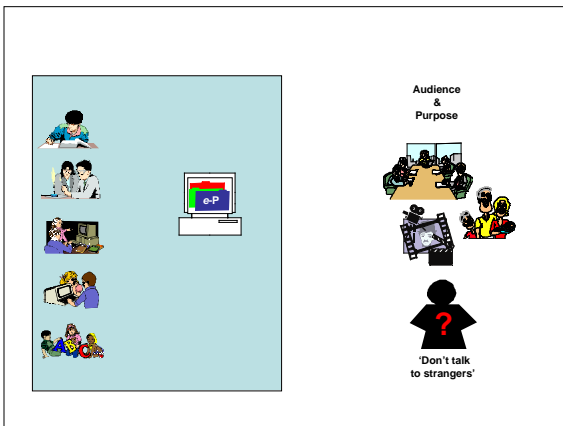
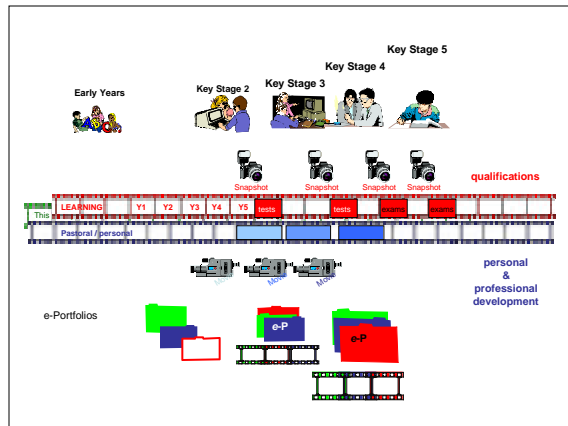
NETLinc

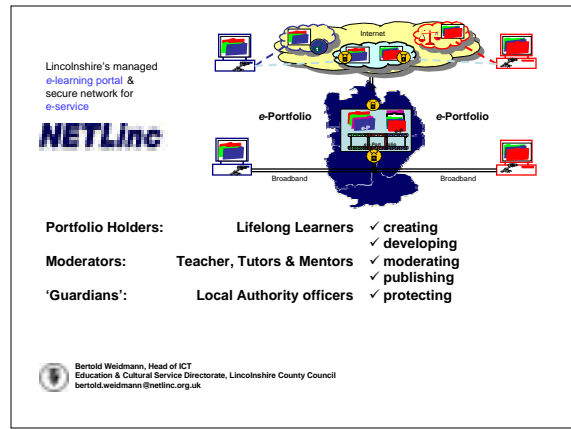
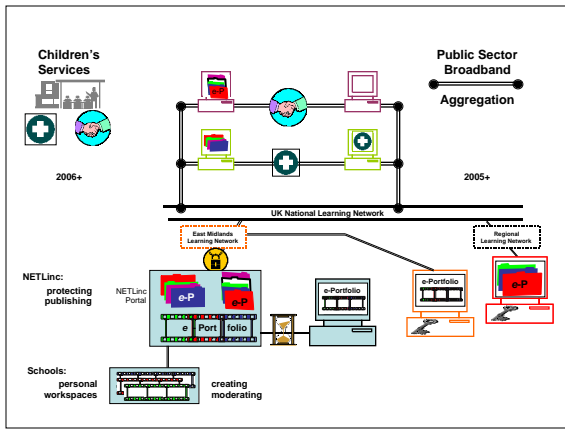
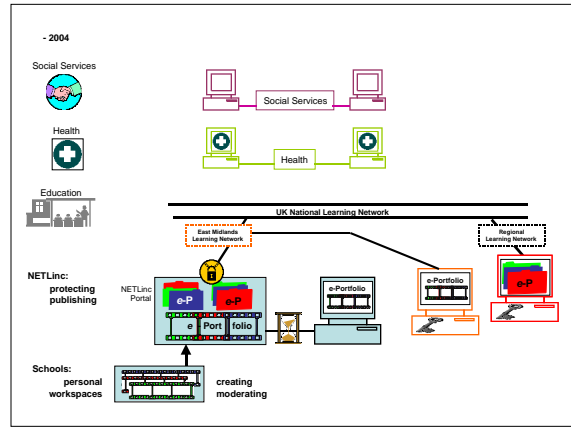
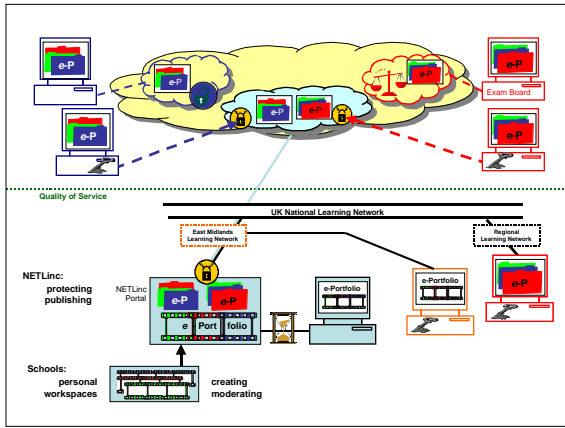
NETLinc Learning Environment

e-Portfolio

NEW VERSION!

name8ys





Berold Weidmann, Head of ICT
 Education & Cultural Services Directorate, Lincolnshire County Council
 berold.weidmann@netlinc.org.uk